



Criteria for all site plan drawings submitted to NIE for new developments

Criteria for Site Plan drawings Submitted to NIE for all new developments

All utilities and government agencies need to obtain clear site plans of new developments to ensure that requirements of keeping clear, legible records of all apparatus are met.

Architects should forward NIE **two** versions of site plan drawings:

The first version is a simple site layout and must meet the following criteria:

Site plan drawing must contain the following features **only** marked up:

- Road Outline
- Footway Outline
- Property Outline
- Fence lines/ garden boundaries
- Drawings must be black and white
- Drawings must contain sufficient reference points to allow orientation with existing Ordnance Survey NI mapping i.e. contain existing buildings, road junctions, roads etc.
- Drawings must have site address and Map number/ OSNI IG Grid Reference number clearly marked up.
- All drawings must be scaled to 1:500, 1:200 or 1:100.
- Drawings may be accepted electronically in **pdf format only**.
- Should drawings only be available in paper form then **4 copies** of site plans to the above specification are required.

This simple site layout is similar to the format used by Ordnance Survey NI for their Ace mapping.

An example of this simple site layout is outlined in Example 1.

The second version is a detailed site plan and should include:

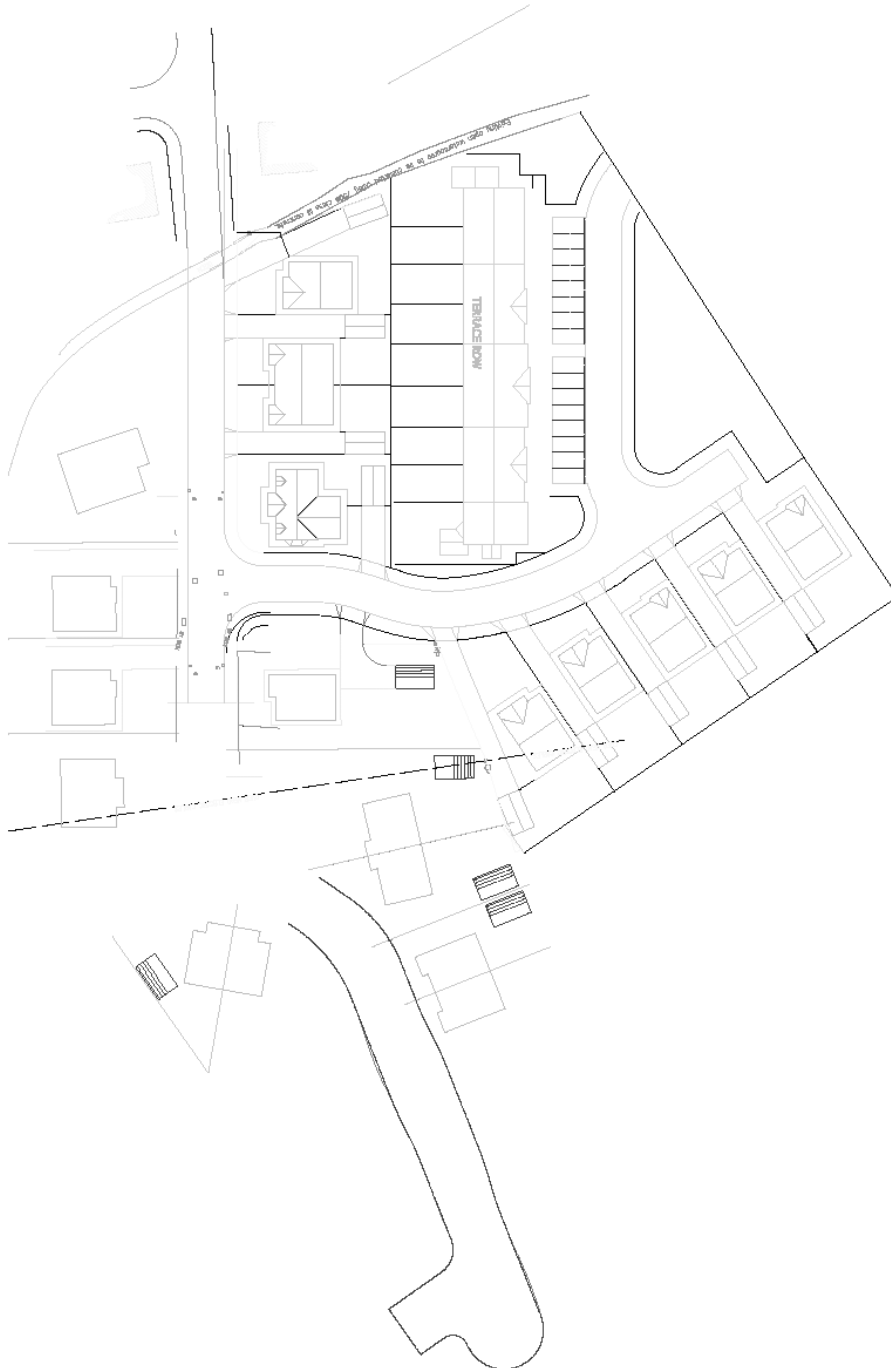
- All of the criteria outlined above however this drawing may be accepted in colour.
- Site numbers
- Finished Ground Levels
- Site Splays at road entrances etc
- All other services, manholes marked up. (This is required for design purposes)
- Car parking spaces
- Trees, hedges, planting areas
- Drawings may be accepted electronically in **pdf format only**.
- Should this type of drawing only be available in paper form then **1 Copy** of this site plan is required.

This version of your site plan is similar to the drawings that you have previously furnished to NIE for design purposes.

An example of this detailed site layout is outlined in Example 2.

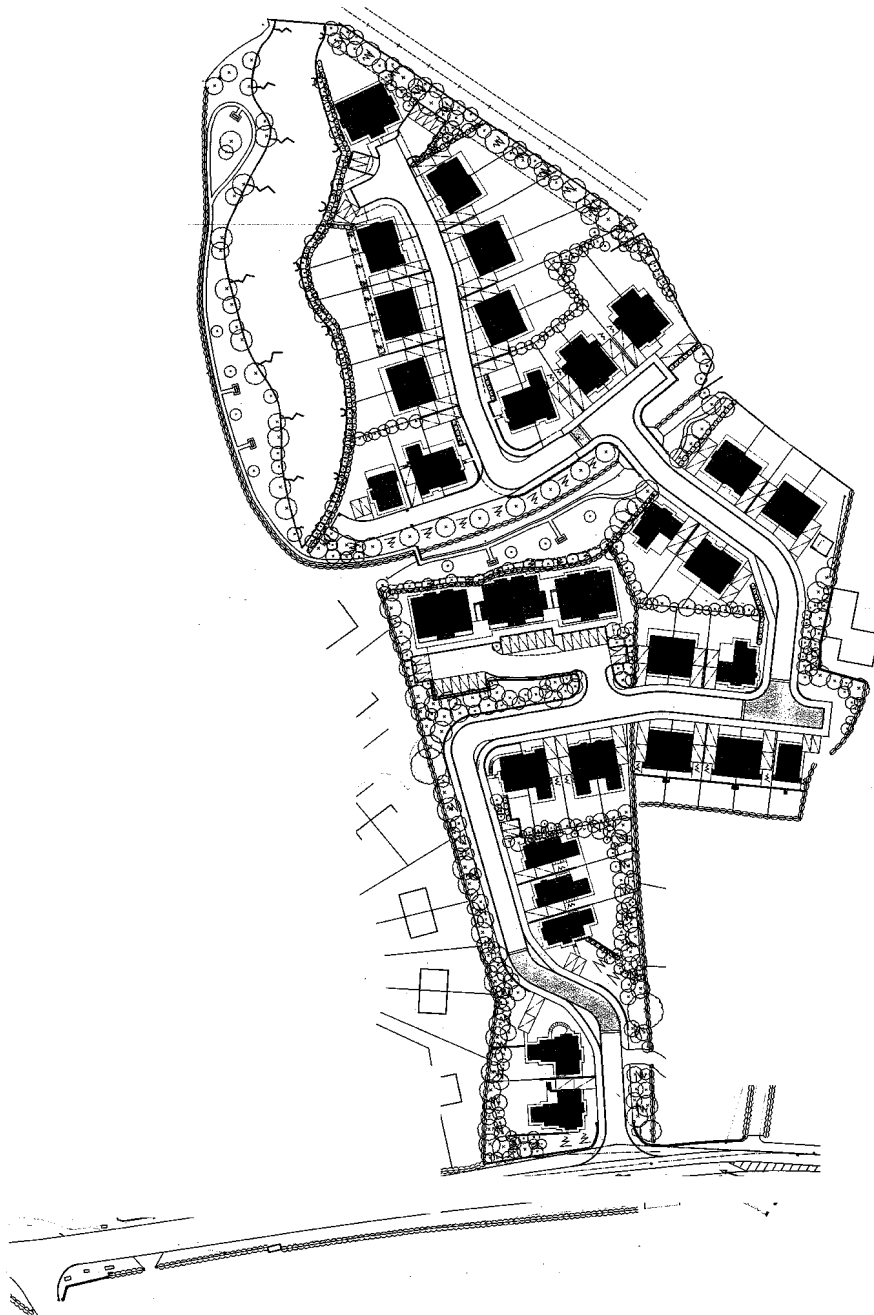
Example 1 – Simple Site Layout

**NIE require this simple site layout either in electronic form (pdf format only)
OR 4 paper copies of this simple site layout**



Example 2 – Detailed Site Layout

NIE require this detailed site layout either in electronic form (pdf format only)
OR 1 paper copy of this detailed site layout



Requirements if there are any changes to the initial site plan submitted to NIE

It is common, particularly in housing sites, for developers to change the initial site layout of the development.

House types can be changed for example changing detached houses to semi-detached houses. Housing density can also be changed for example additional houses erected.

If there are any changes to the original site layout design as the development progresses, then amended site plan drawings must be sent to NIE.

All utilities are obligated to obtain as laid records of mains underground cables that accurately reflect what is actually on site. To achieve this NIE must have an "As Is" record of the actual development.

By communicating with NIE throughout the development of your site and ensuring that any amendments to the site layout are forwarded to NIE as soon as possible we can avoid any undue delays in providing you with an electricity supply.

We would appreciate your attention and your co-operation with this.