



**Northern Ireland Electricity plc**  
Carn Industrial Estate  
Portadown  
BT63 5QJ

Tel 08457 643 643  
Website: [www.nie.co.uk](http://www.nie.co.uk)

Thank you for contacting us about your electricity connection. I would ask you to read this letter carefully as it contains important information about your connection. To process your application it is essential that you provide:

1. **Completed Application Form**
2. **Location Map**
3. **Load Requirements**

In **section 8** of the application form we have asked you to provide certain essential information. If you are unsure where to obtain this detail, your architect/electrician (depending on the requirement) will advise you. If you do not provide this information we will be unable to process your application and this will delay your connection.

When we receive your application we will contact you to discuss your requirement and provide a quotation for the work. When the quotation is accepted we may need permission from other landowners or Government bodies before work can begin. Depending on which of the following apply to your connection this may take up to 6 months

1. **Planning permission** - may be required from DRD Planning, which can take 12 to 15 weeks.
2. **Wayleaves** - permission from local landowners whose land our equipment must pass through to provide your connection (timescale will depend on their willingness to sign the agreement).
3. **DRD Roads** - permission will be required from DRD (Roads & Streetworks Act) should the connection require a road or footpath opening, which can take up to 6 weeks.

Once the above approvals and payment have been received, we will contact you to confirm arrangements to have the work carried out.

**SAFETY ISSUES: I would at this early stage draw your attention to the dangers associated with carrying out work in close proximity to NIE equipment. Please read the enclosed Safety Advice leaflet carefully. Site Safety should be in accordance with: HSC guidance notes GS6 (avoidance of danger from overhead electric lines) and HSE booklet HS(G)47 (avoiding danger from underground services). This paragraph should be brought to the attention of all interested parties involved in your project.**

We have **outlined overleaf** the process and timescales involved in providing your connection. Should you require information at any time please do not hesitate to contact NIE on **08457 643 643** and **select option 2 twice**. Thank you for your enquiry and we look forward to providing you with a quality service.

Yours sincerely

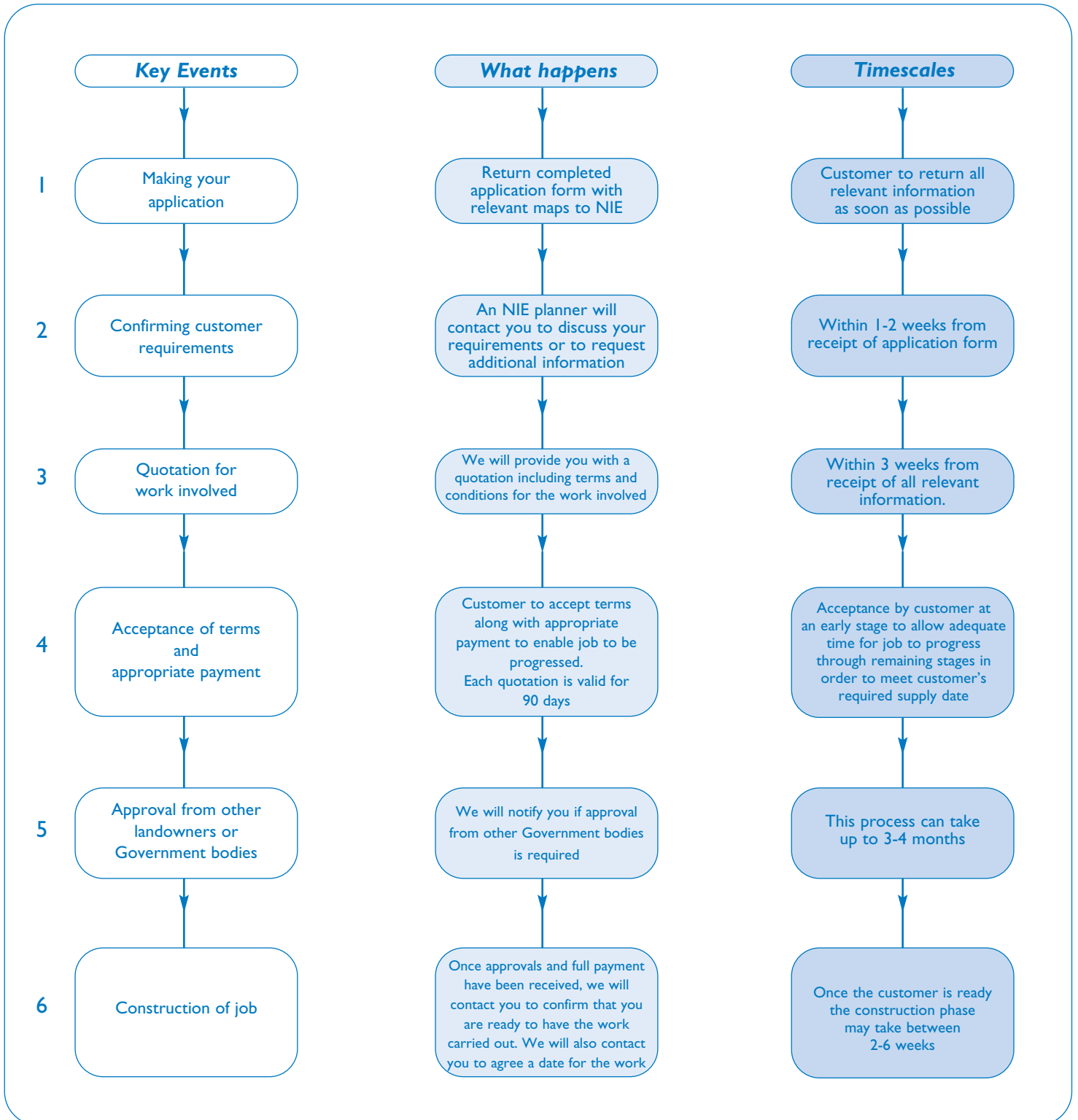
Con Feeney - *Customer Operations Manager*



# The critical steps involved in the provision of your connection

Please note: this process may take **up to 6 months to complete**.

**NIE** will endeavour to progress your application **as promptly as possible**



**NIE** may contact you on completion of the job to ensure that you are happy with the work carried out